



# REIMAGINE NORTH OF MAIN

## Community Development

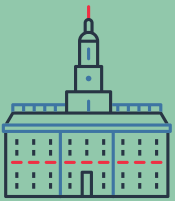
The Fitchburg Arts Community pipeline project received Planning Board approval and completed the preliminary design for a 68-unit housing project, 70% of which will be designated affordable, specifically to attract artists to the area. NewVue Communities and the Fitchburg Art Museum lead this effort



## Economic Development



Fitchburg State University (FSU) renovated 7,000 sq ft as the 1st phase of the Theater Block renovation, which houses an IdeaLab and state-of-the-art game design studio



**\$23.5 million** City Hall renovations were completed in fall 2020

**10** new and sustained businesses opened in the NoM neighborhood



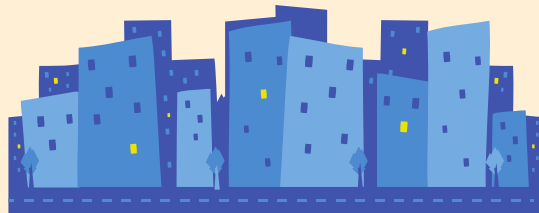
## Housing



Residential vacancies **decreased** in Fitchburg overall and in 2 of 3 NoM neighborhoods since 2014



Home values have **increased** and foreclosures have decreased in Fitchburg since 2014



NewVue is piloting the Liabilities to Assets program, a MA 121 A Corporation initiative, that will support municipalities in the region to turn 35-40 properties that are currently neighborhood liabilities into neighborhood assets, including 4-5 properties in NoM neighborhood

## Community Engagement



Community Stewards, Junior Stewards, Health Stewards, Art Stewards, and Public Education Stewards were launched to train and engage 244 residents

The FSU Resident Leadership Institute graduated 34 students. The Resident Leadership Institute and Community Stewards have about 30 graduates supporting major projects in the area



**Over \$28 million in funds raised**

## CONTACT INFORMATION

<https://www.facebook.com/RelmagineNOM/>

A community development initiative in partnership with Fitchburg State University, Montachusett Opportunity Council, NewVue Communities, City of Fitchburg, Fitchburg Art Museum, Minority Coalition-Three Pyramids, The Health Foundation of Central MA, and the Institute for Behavioral Health, Brandeis University